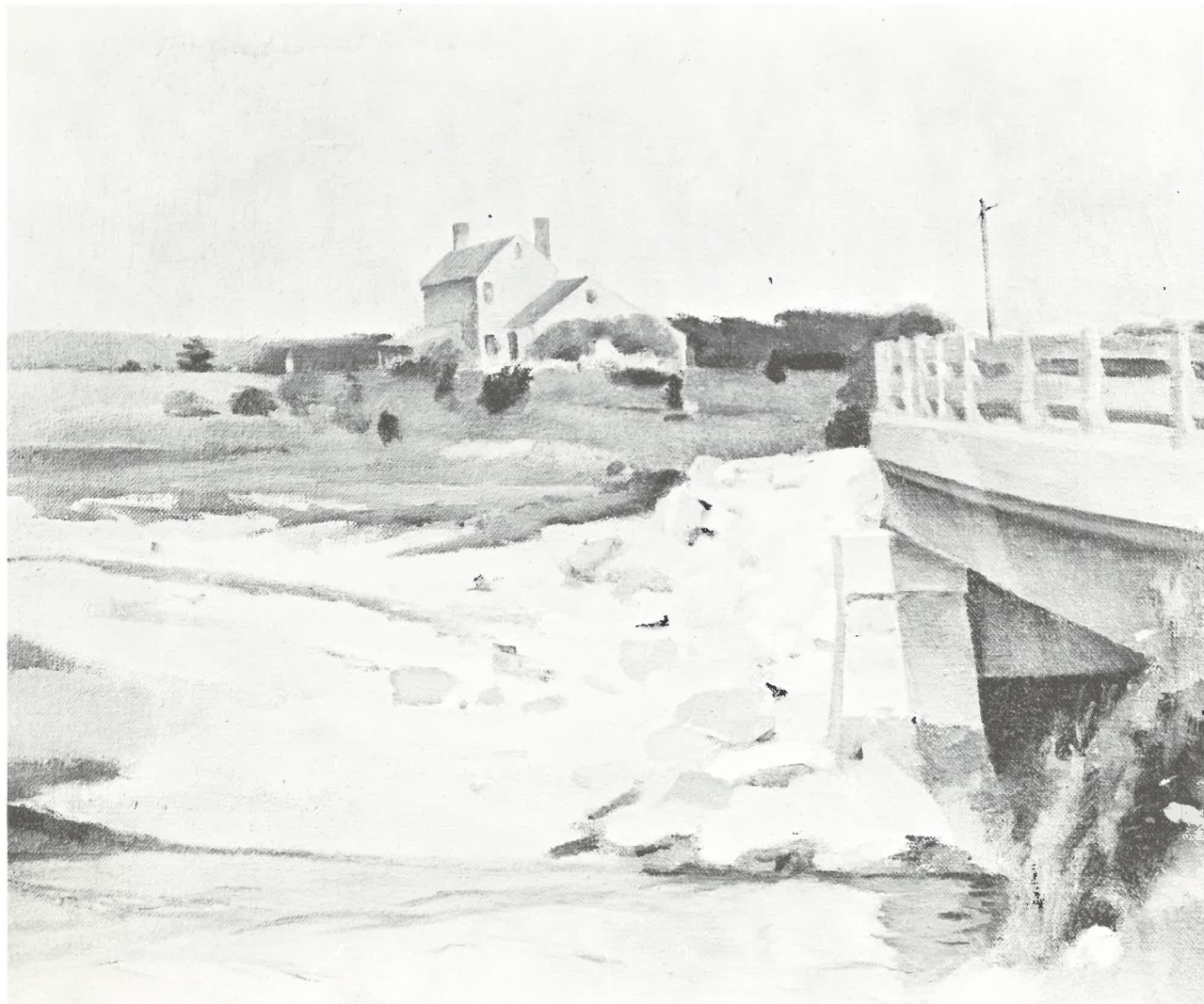


24. *Mimi*

# Lennart Anderson

August 8-August 29, 1974

MEREDITH LONG AND COMPANY  
2323 San Felipe, Houston, Texas 77019



21. *New Bedford Bridge*

## Catalogue

### PAINTINGS

1. *Nude on Chair*  
oil on canvas, 60 x 50 inches
2. *Still Life with Black Cup, Egg Box, and Red Drape*  
oil on canvas, 21 x 20 inches
3. *Factories, Madison, Maine*  
oil on canvas, 17 x 20 inches
4. *Still Life with Statue*  
oil on canvas, 16 $\frac{1}{4}$  x 20 $\frac{1}{4}$  inches
5. *Portrait of Young Girl*  
oil on canvas, 20 x 17 inches
6. *Nude on Chair*  
oil on canvas, 17 x 20 inches
7. *Landscape, Brookline, Vermont*  
oil on canvas, 20 x 24 inches
8. *Studio in Landscape*  
oil on canvas, 24 x 30 inches
9. *Still Life with Espresso Maker, Bread, and Green Box*  
oil on canvas, 36 x 31 inches
10. *Still Life with Blue Vase*  
oil on canvas, 27 $\frac{1}{2}$  x 30 inches
11. *Mark Fineman*  
oil on canvas, 13 x 16 inches
12. *New Bedford Bridge*  
oil on canvas, 20 $\frac{1}{4}$  x 15 $\frac{1}{4}$  inches
13. *Still Life with Statue*  
oil on board, 10 x 14 inches
14. *Trees at the Gorge*  
oil on canvas, 14 x 17 inches
15. *Still Life with Statue and Cheese Box*  
oil on canvas, 12 x 15 inches
16. *Tree near Wilmington, Vermont*  
oil on canvas, 17 x 14 inches
17. *Sarah Gluntzman*  
oil on canvas, 12 x 9 inches
18. *Still Life with Blue Cup, Egg Box, and Paper Plates*  
oil on canvas, 12 x 15 inches
19. *Moored Skiff*  
oil on canvas, 12 x 14 inches
20. *Still Life with Toaster*  
oil on canvas, 36 x 42 inches
21. *New Bedford Bridge*  
oil on canvas, 13 $\frac{1}{4}$  x 17 inches
22. *Georgianna Collins*  
oil on canvas, 17 x 14 inches
23. *The Terrace*  
oil on canvas, 11 $\frac{5}{16}$  x 16 $\frac{1}{16}$  inches
24. *Mimi*  
oil on cardboard, 14 $\frac{3}{4}$  x 12 $\frac{1}{8}$  inches
25. *Landscape with Lake*  
oil on canvas, 14 x 18 inches

## Biography

### DRAWINGS

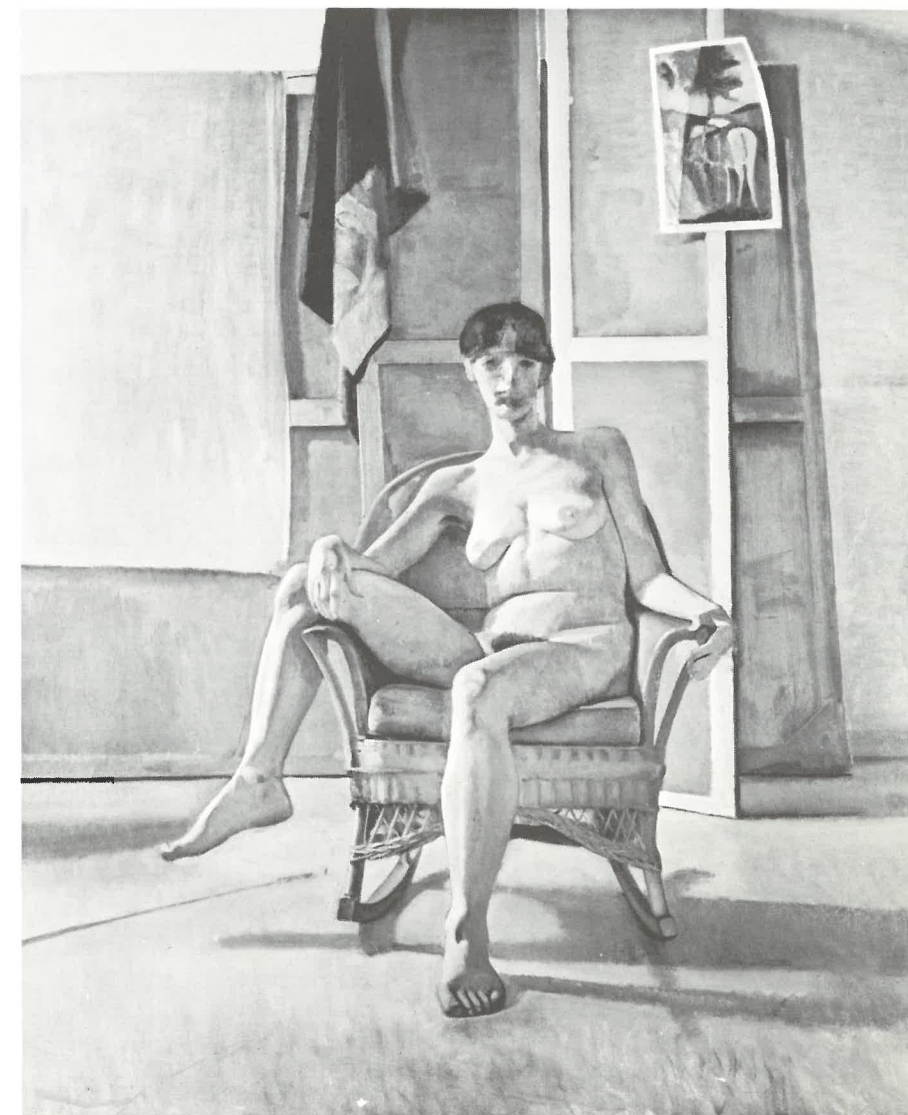
26. *Male Head*  
pencil on paper,  $9\frac{1}{4} \times 5\frac{3}{16}$  inches
27. *Nude with Raised Leg*  
charcoal on paper,  $13\frac{1}{2} \times 9\frac{3}{4}$  inches
28. *Bending Nude*  
charcoal on paper, 16 x 10 inches
29. *Study for Street Scene*  
charcoal on paper,  $12\frac{3}{4} \times 9\frac{3}{4}$  inches
30. *Study for Street Scene*  
charcoal on paper,  $16\frac{3}{4} \times 11\frac{3}{4}$  inches
31. *Lady's Head*  
charcoal on paper,  $10\frac{1}{2} \times 8$  inches
32. *Still Life with Earthenware and Cruet*  
pencil and charcoal on paper,  $17\frac{3}{4} \times 11\frac{3}{4}$  inches
33. *Still Life with Egg Box*  
pencil and charcoal,  $16\frac{1}{2} \times 11\frac{1}{8}$  inches
34. *Street Scene, Rome*  
charcoal on paper, 16 x 20 inches
35. *Study for Street Scene*  
pencil on paper,  $10\frac{1}{2} \times 8$  inches

Lennart Anderson was born in Detroit, Michigan, in 1928 and grew up there. He received a B.F.A. from the Art Institute of Chicago and an M.F.A. from the Cranbrook Institute of Art. He won Louis Comfort Tiffany grants in 1957 and in 1961 and worked in Italy on a Prix de Rome fellowship from 1958 through 1961. In 1961, Anderson won a painting award at the Silvermine Guild Exhibition; he received the President's Council on the Arts Award in 1965; an Ingraham Merrill Foundation Award in 1967; the American Academy of Arts and Letters Award in 1970; and the Childe Hassam Purchase Prize in 1973.

Anderson has exhibited at the Tanager, Davis, Graham, Schoelkopf, Byron, and Zabriskie Galleries in New York. He and Edwin Dickinson had a two-man exhibition at the Kansas City Art Museum, Missouri; his paintings have been included in a number of major exhibitions including the Carnegie Internationals of 1964 and 1966; the Annual Exhibition of Contemporary Art at the American Academy of Arts and Letters, New York; an exhibition of contemporary realism at Boston University; and the Twenty-Ninth Biennial Exhibition at the Corcoran Gallery, Washington, D. C.

He has taught at Pratt Institute, the Art Students League, Yale University, Columbia University, Princeton University, Richmond College, Chatham College, the New York Studio School, and is presently at Brooklyn College.

Lennart Anderson's paintings are in the collections of the Whitney Museum of American Art, New York; the Brooklyn Museum, New York; the Hirshhorn Collection, Washington, D. C.; the Minneapolis Institute of Arts, Minnesota; and the Weatherspoon Gallery at the University of North Carolina, Greensboro.



1. *Nude on Chair*



MEREDITH LONG AND COMPANY  
2323 San Felipe, Houston, Texas 77019

